

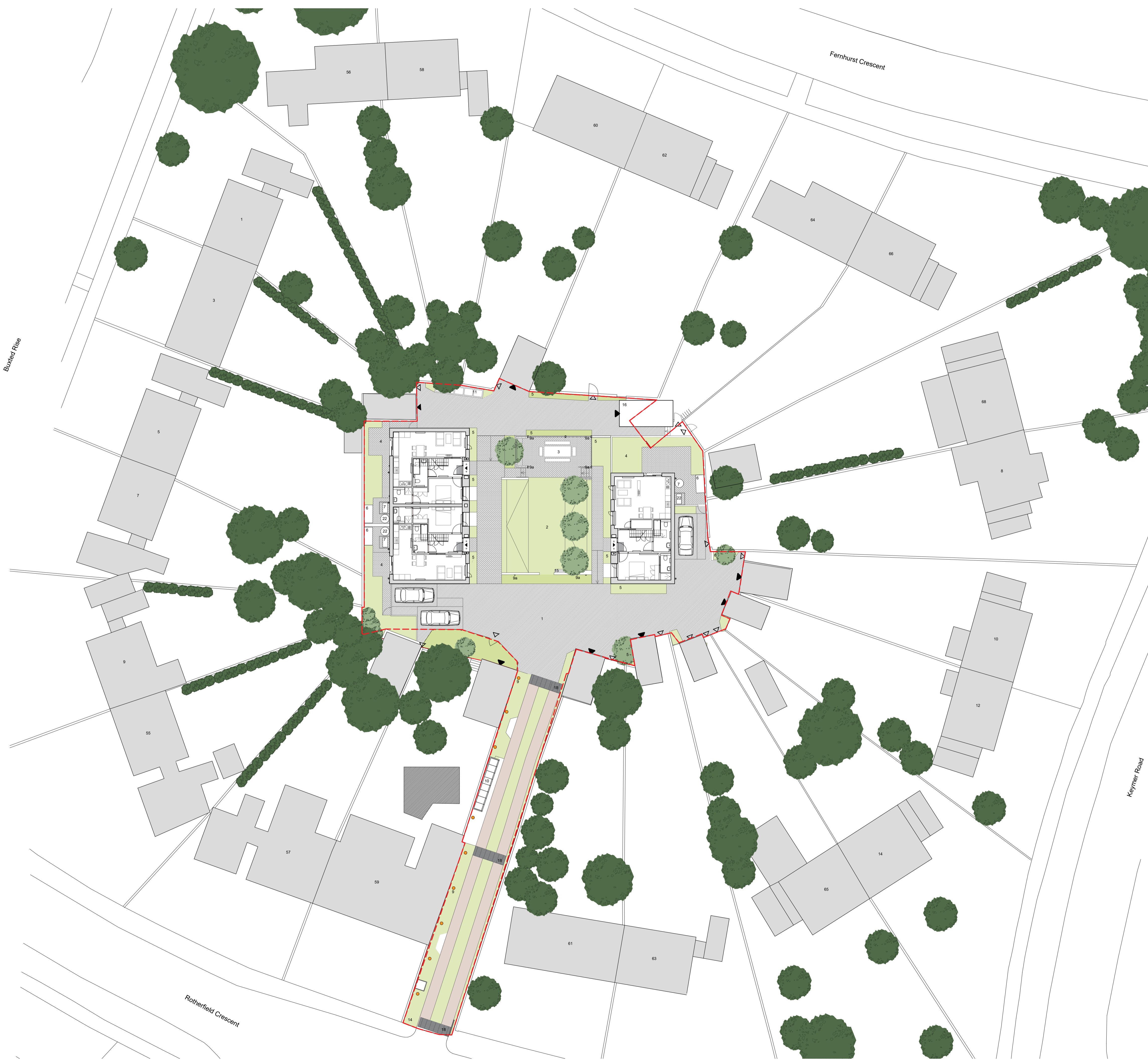
- GENERAL NOTES:
- All materials and workmanship to be of a high standard.
  - This drawing is the copyright of Innes Associates. It must not be copied or reproduced without permission.
  - The design is based on survey information provided by others, dimensions to existing structures should be checked on site prior to construction.
  - Do not scale this drawing. If in doubt, ask.
  - This drawing must be read in conjunction with all relevant drawings and documents by architect and design team. Any discrepancy is to be reported to the Architect.
  - All dimensions in millimetres unless otherwise noted.
  - All structural, M&E and landscape information is indicative. Refer to consultant's drawings and specifications for proposals relevant to each discipline.

- KEY
- 1 Main Access (Turning Area)
  - 2 Communal Garden
  - 3 Communal Passage
  - 4 Private Garden
  - 5 Planting Beds (Herbaceous/Omnamental Shrub)
  - 6 Cycle storage
  - 7 Rainwater Collection Tank to S17120
  - 8 Photovoltaic Panels
  - 9 Ground Spotlights to V91440
  - 9a Wall lights to V91440A
  - 10 Recycling + Refuse (PPC aluminium structure)
  - 11 Compost + Gardening Store (Timber structure)
  - 12 Green Roof
  - 13 Rooflight (Opening) to L10460
  - 14 "The Gardens" entrance sign (PPC aluminium structure)
  - 15 Brick Retaining Seat Wall with Hardwood Timber Top to G50/220
  - 16 New garage
  - 17 Passing Place
  - 18 Rubble Strip
  - 19 Access for maintenance only
  - 20 Kerb protection
  - 21 Low fence
  - 22 Air Source Heat Pump

- ▶ Vehicular Access Retained
- ▶ Pedestrian Access Retained
- - - Boundary Application Site

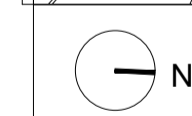
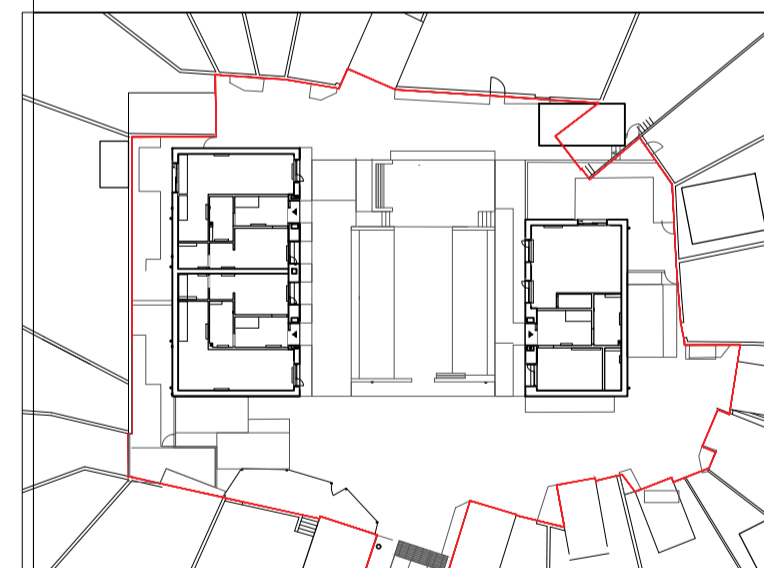
MATERIALS

- Herbaceous/Omnamental Shrub Planting
- Grass/Lawn
- Reinforced Gravel
- Loose Gravel (with planted margins)
- Brick (to match houses)
- Planted hedge around Post and Wire Fence
- Granite setts



P1 Planning Issue 18.06.21 CR

REV DESCRIPTION DATE DRAWN



**INNES ASSOCIATES**  
ARCHITECTURE & URBAN DESIGN

6-8 COLE STREET, LONDON SE1 4YH  
T 020 7928 6734  
WWW.INNESASSOCIATES.NET

TITLE <b>Site Plan Proposed</b>		
PROJECT NO <b>114</b>	DRAWING NO <b>01 01</b>	REVISION <b>P1</b>
PROJECT <b>Rotherfield Crescent</b>		
CLIENT <b>Brighton &amp; Hove City Council</b>		
SCALE <b>1:200</b>	SIZE <b>A1</b>	STAGE <b>3</b>
DATE <b>June 2021</b>	DRAWN BY <b>JL</b>	CHECKED BY <b>SI</b>

